



**Cristian Apa, M.Sc.**

*SSSR IBM Romania*

## **IBM Cognos Performance Management via Planning, Reporting, Analysis**

**IBM**<sup>®</sup>

**COGNOS**<sup>®</sup>

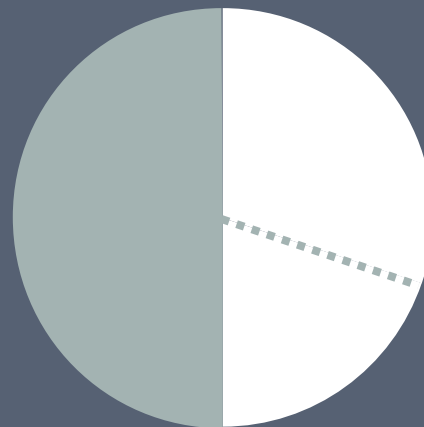
AN IBM<sup>®</sup> COMPANY



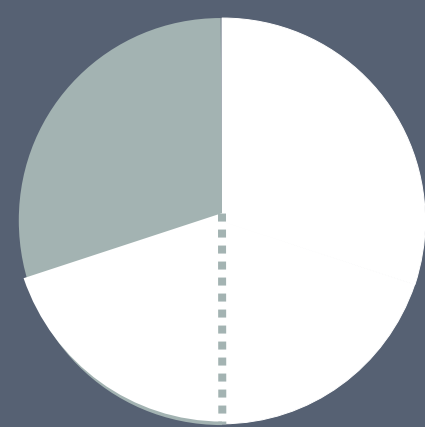
# Amount of information managers receive that has no value



0-30%



30-50%



Over 50%

Source: Accenture survey released January 4, 2007

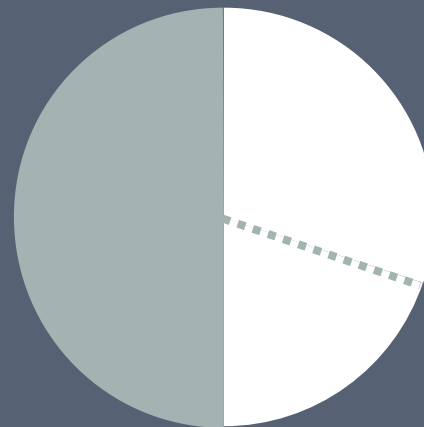
**COGNOS**  
AN IBM® COMPANY



# Amount of information managers receive that has no value



0-30%



30-50%



Over 50%

Source: Accenture survey released January 4, 2007



# How much time do managers waste each day, searching for information?



**0-30 min**



**1-3 Hours**



**Over 3 Hours**

Source: Accenture survey released January 4, 2007

**COGNOS**  
AN IBM® COMPANY



# Time managers waste each day searching for information



**0-30 min**



**1-3 Hours**



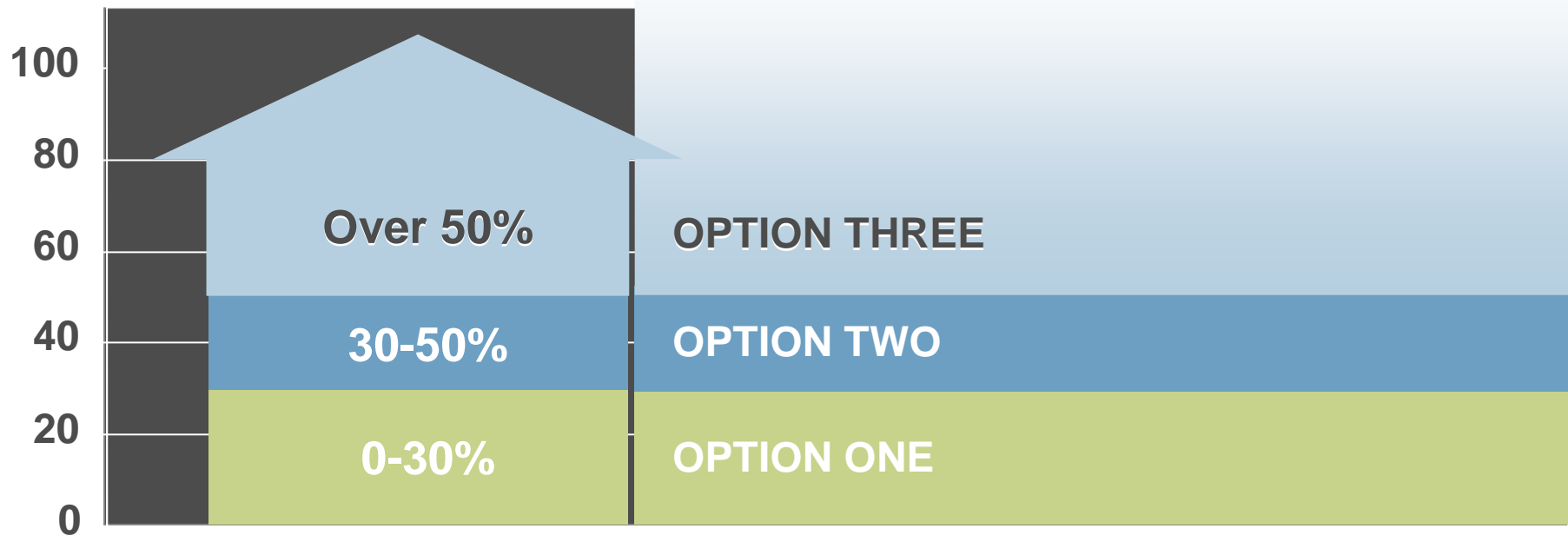
**Over 3 Hours**

Source: Accenture survey released January 4, 2007

**COGNOS**  
AN IBM® COMPANY



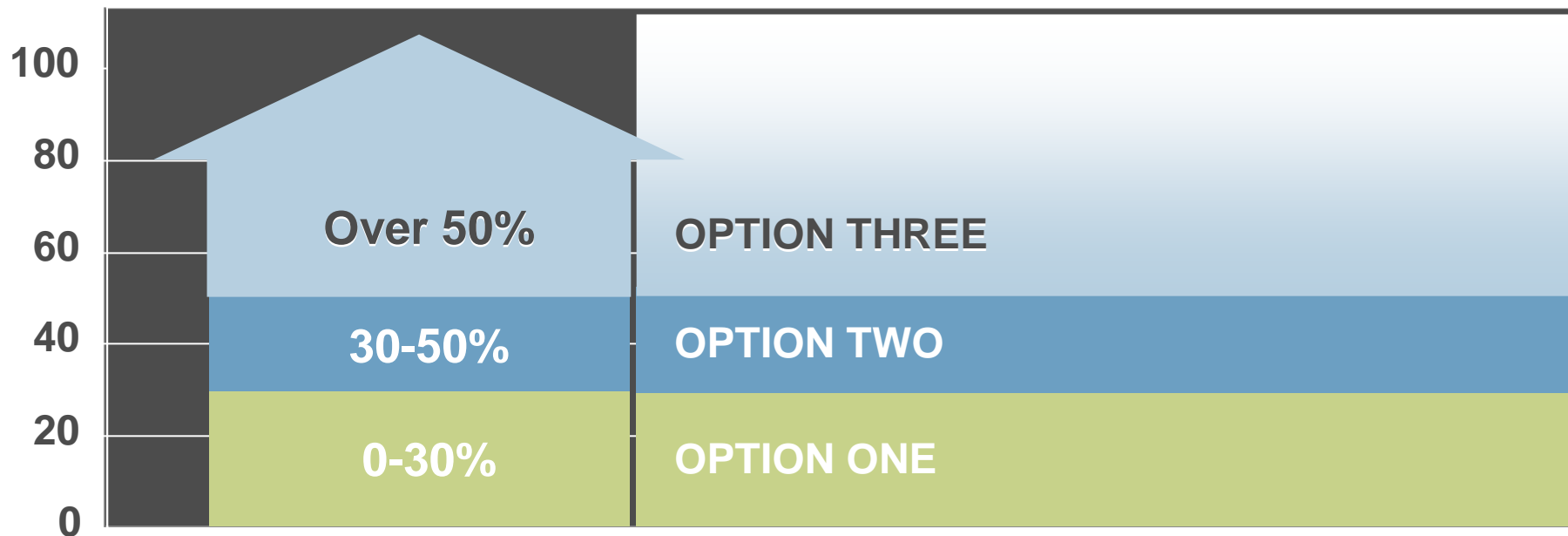
# What percentage of managers accidentally use the wrong information at least once a week?



Source: Accenture survey released January 4, 2007



# What percentage of managers accidentally use the wrong information at least once a week?



Source: Accenture survey released January 4, 2007



# Key Challenge is Unlocking the Value of Information

**Information  
Silos**

**Volume  
& Variety**

**Business  
Velocity**

**47%** of users  
**don't have  
confidence**  
in their information

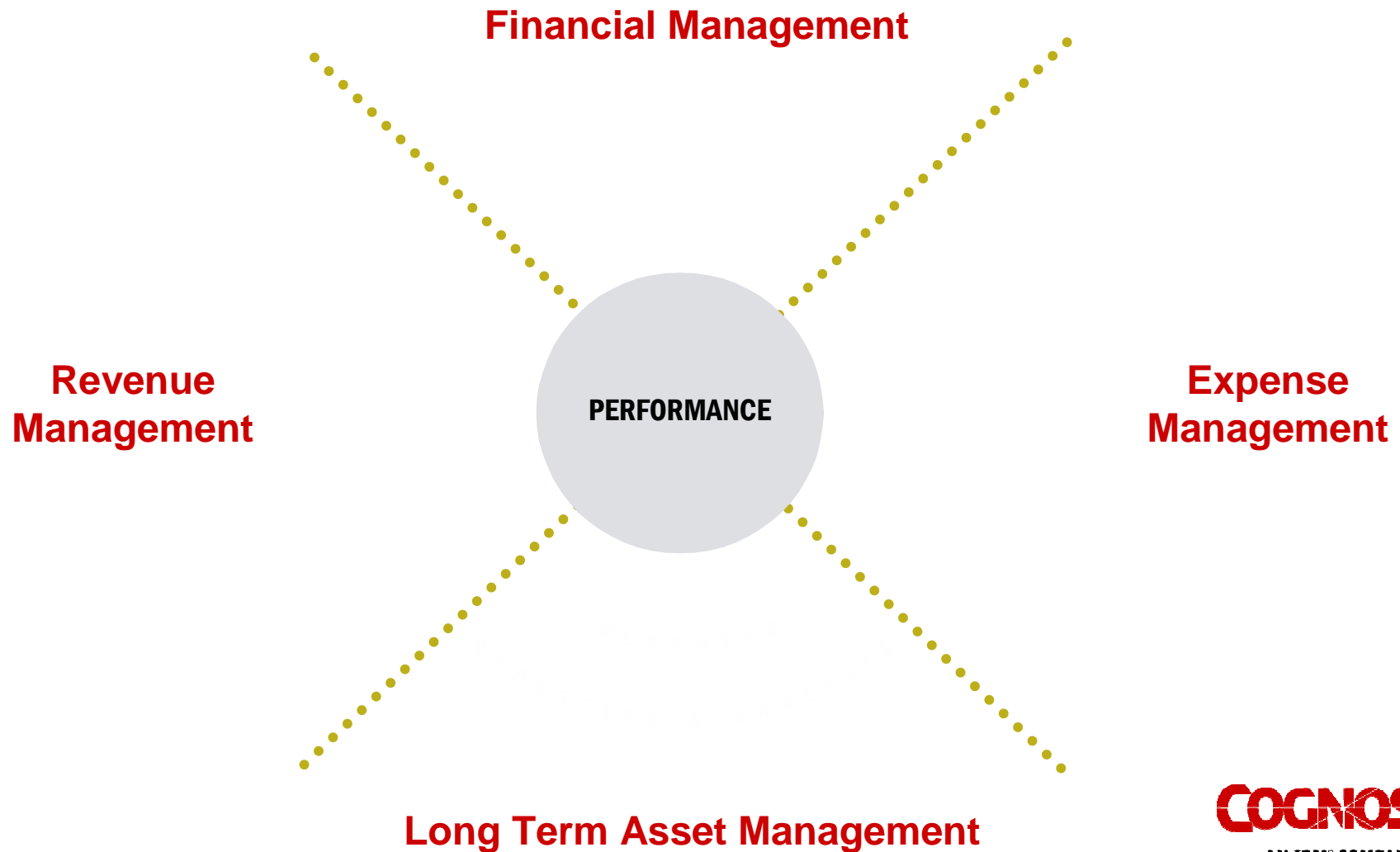
**59%** of managers  
**miss  
information**  
they should have used

**42%** of managers  
**use wrong  
information**  
at least once a week





# Performance Management





# Performance Management

**Financial Management**

*How are we doing?*

**Revenue  
Management**

**Expense  
Management**

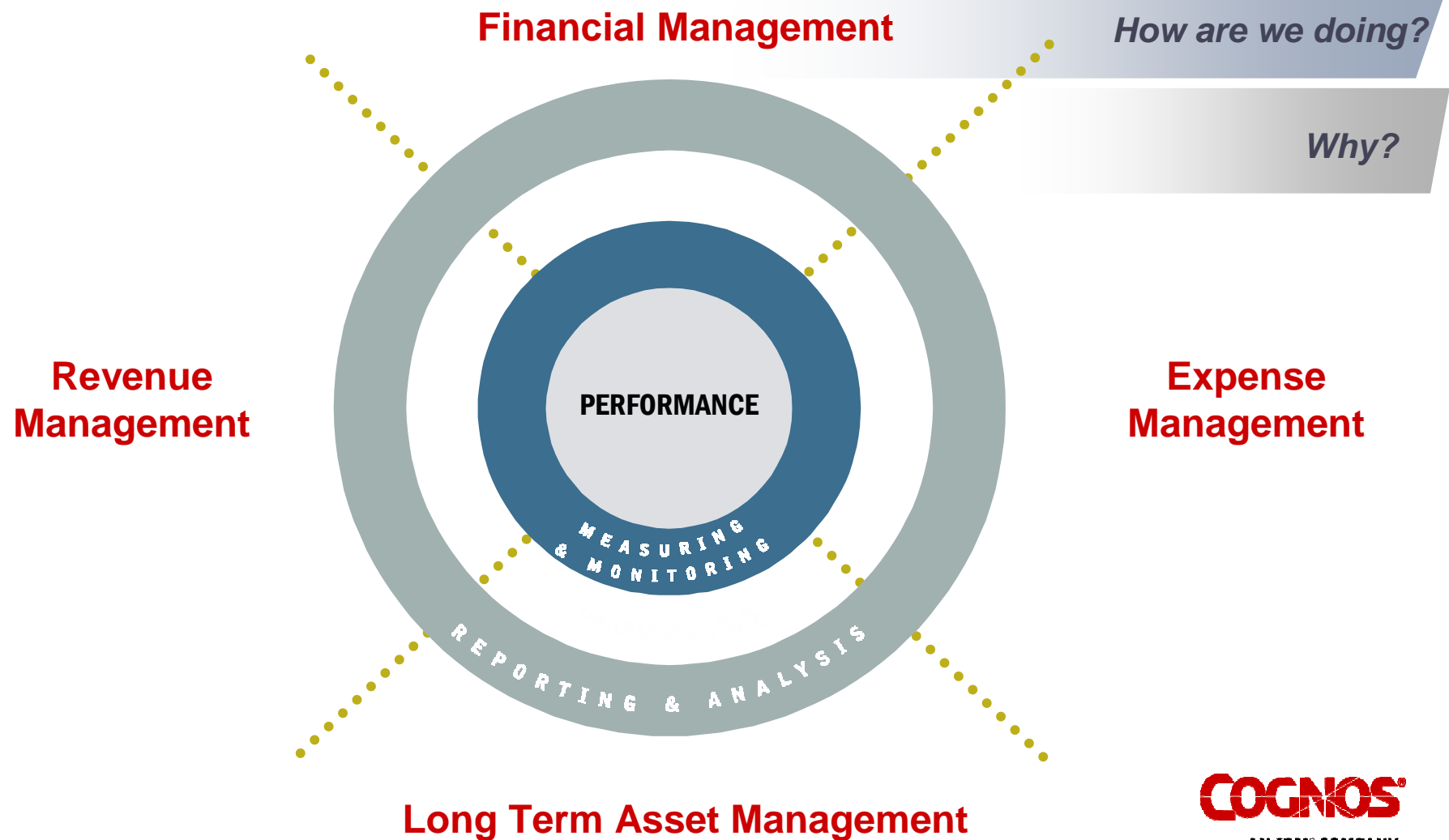


**Long Term Asset Management**

**COGNOS**  
AN IBM® COMPANY

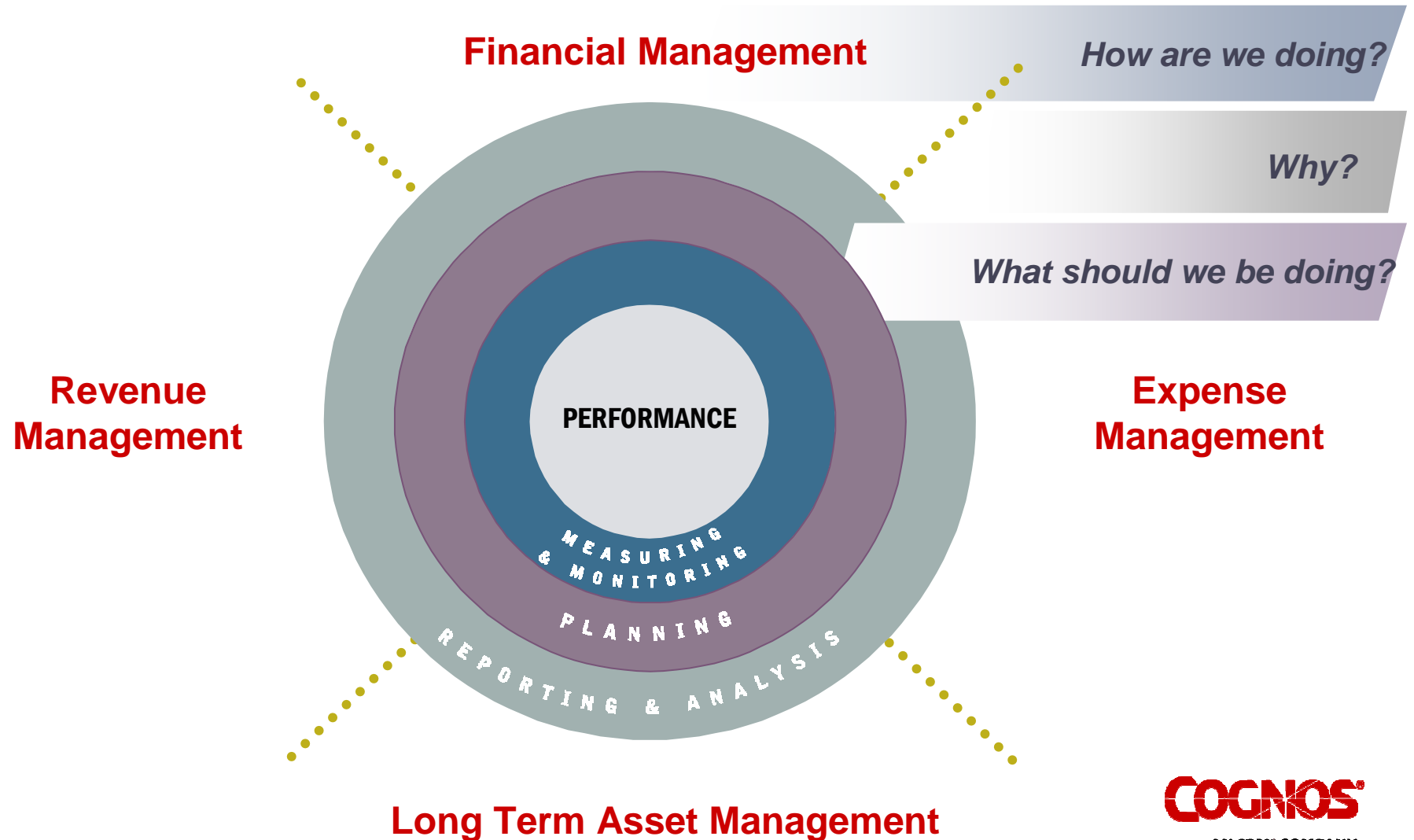


# Performance Management



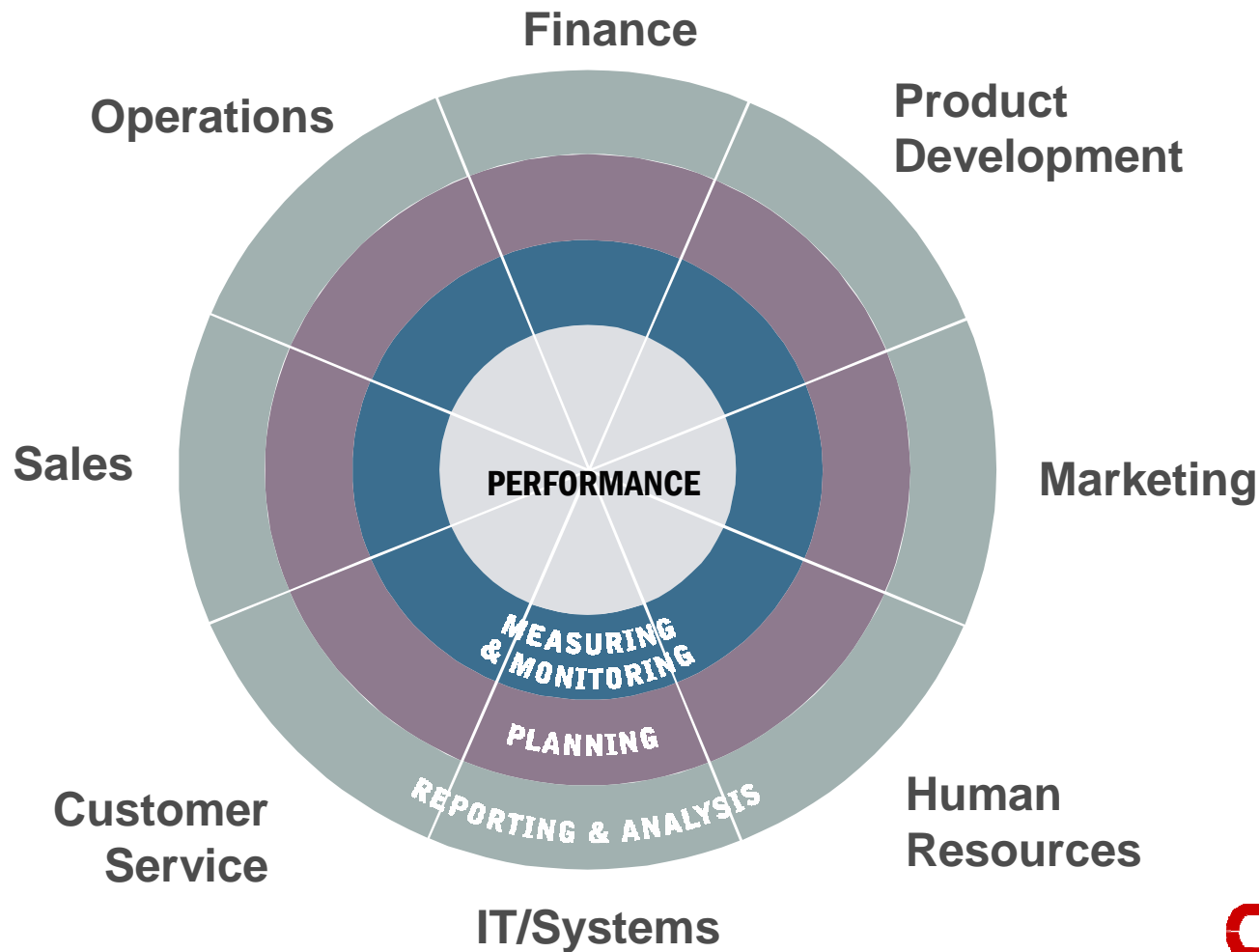


# Performance Management

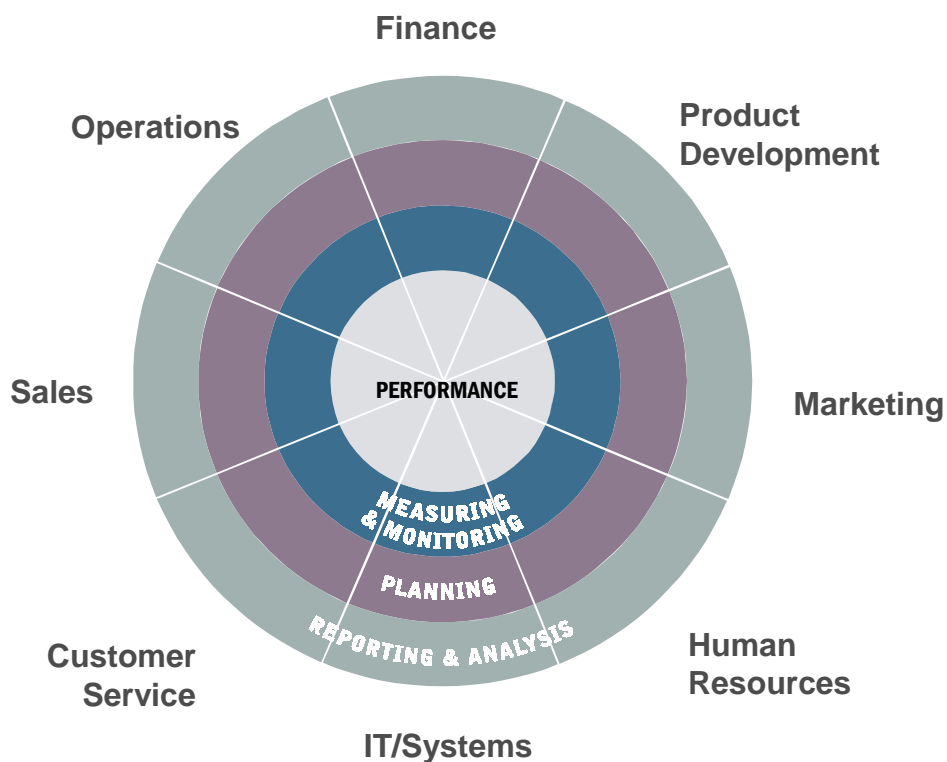




# Performance Management Framework for Coordinated Decision Making



# A System for Performance Management



- Shared Understanding

- What has happened
- Why it happened
- What needs to be done

- Information Prioritized by Strategy

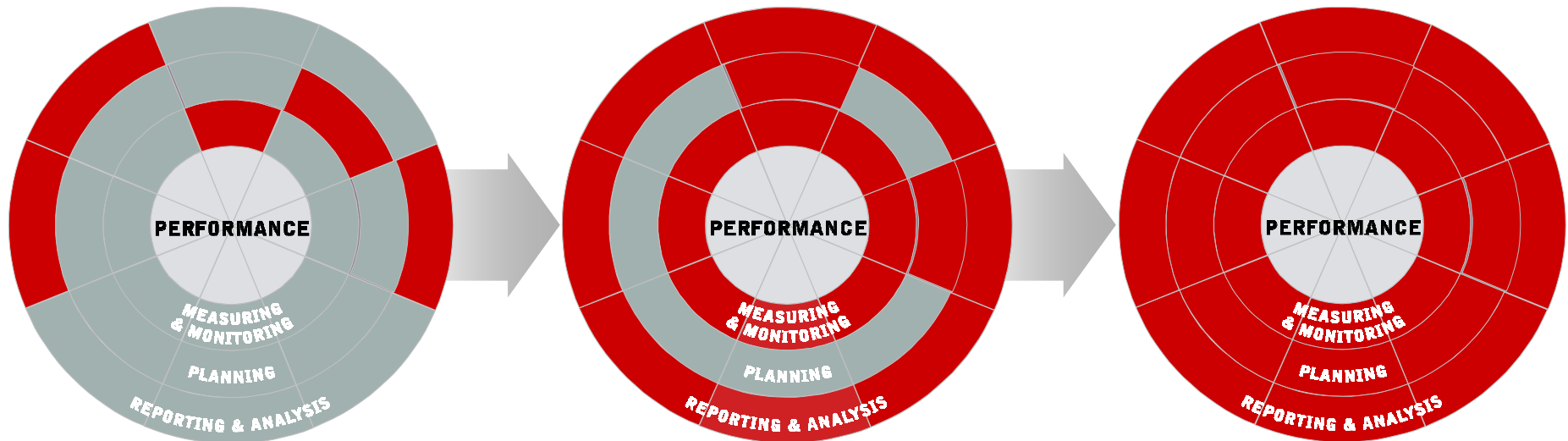


# The Performance Management Journey Customer Phases

*Departmental  
Applications*

*Enterprise Capabilities  
Independent Planning*

*Coordinated  
Decision Making*



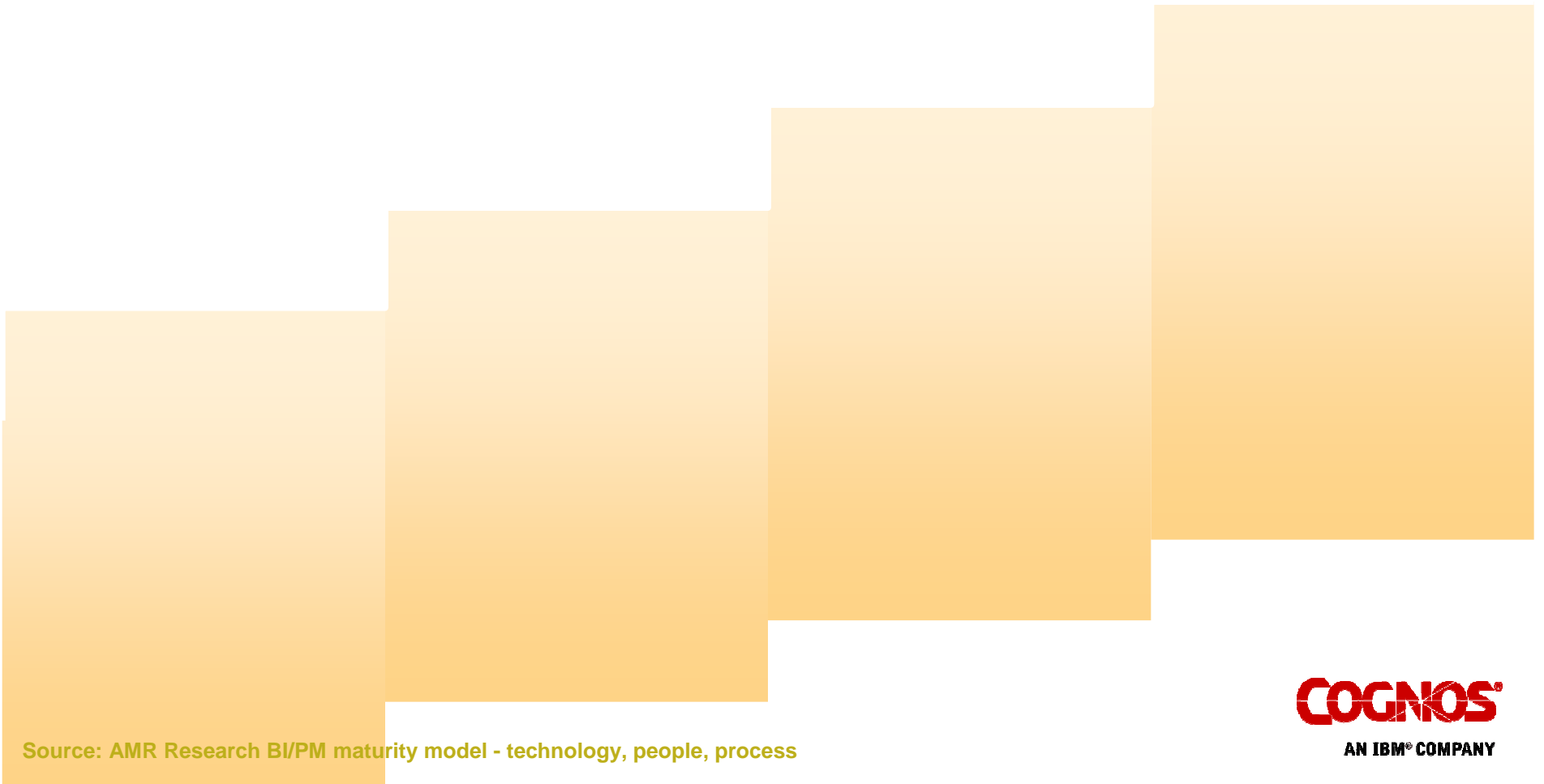
*What do you need to support your  
Performance Management Journey?*

**COGNOS**  
AN IBM® COMPANY



# Performance Management Maturity Model

AMR Research technology, people, process



Source: AMR Research BI/PM maturity model - technology, people, process

**COGNOS**  
AN IBM® COMPANY





# Performance Management Maturity Model

AMR Research technology, people, process

## Step 1: Reacting

*Where have we been?*

- Project based departmental approach
- Function-specific metrics
- Use of spreadsheets/manual processes
- Focus on data access, reducing report cycle time
- Last business cycle view

## Step 2: Anticipating

*Where are we now?*

## Step 3: Collaborating

*Where are we going?*

## Step 4: Orchestrating

*Are we all on the same page?*

Source: AMR Research BI/PM maturity model - technology, people, process



# Performance Management Maturity Model

AMR Research technology, people, process

## Step 1: Reacting

### *Where have we been?*

- Project based departmental approach
- Function-specific metrics
- Use of spreadsheets/manual processes
- Focus on data access, reducing report cycle time
- Last business cycle view

## Step 2: Anticipating

### *Where are we now?*

- Projects more strategic, visible across depts.
- Functions are largely siloed
- VP-level accountability
- Tools & business process based - dashboards prominent
- Focus on bottom-line performance (cost savings);
- Current status view

## Step 3: Collaborating

### *Where are we going?*

## Step 4: Orchestrating

### *Are we all on the same page?*

Source: AMR Research BI/PM maturity model - technology, people, process



# Performance Management Maturity Model

AMR Research technology, people, process

## Step 1: Reacting

### *Where have we been?*

- Project based departmental approach
- Function-specific metrics
- Use of spreadsheets/manual processes
- Focus on data access, reducing report cycle time
- Last business cycle view

## Step 2: Anticipating

### *Where are we now?*

- Projects more strategic, visible across depts.
- Functions are largely siloed
- VP-level accountability
- Tools & business process based dashboards prominent
- Focus on bottom-line performance (cost savings);
- Current status view

## Step 3: Collaborating

### *Where are we going?*

- Multi-department, across silos
- Collaborative, accountable, coordinated
- Operational/financial metrics from the top
- Integrated planning - aligns resources across groups
- Focus on performance improvement

## Step 4: Orchestrating

*Are we all on the same page?*

Source: AMR Research BI/PM maturity model - technology, people, process



# Performance Management Maturity Model

AMR Research technology, people, process

## Step 1: Reacting

### *Where have we been?*

- Project based departmental approach
- Function-specific metrics
- Use of spreadsheets/manual processes
- Focus on data access, reducing report cycle time
- Last business cycle view

## Step 2: Anticipating

### *Where are we now?*

- Projects more strategic, visible across depts.
- Functions are largely siloed
- VP-level accountability
- Tools & business process based dashboards prominent
- Focus on bottom-line performance (cost savings);
- Current status view

## Step 3: Collaborating

### *Where are we going?*

- Multi-department, across silos
- Collaborative, accountable, coordinated
- Operational/financial metrics from the top
- Integrated planning - aligns resources across groups
- Focus on performance improvement

## Step 4: Orchestrating

### *Are we all on the same page?*

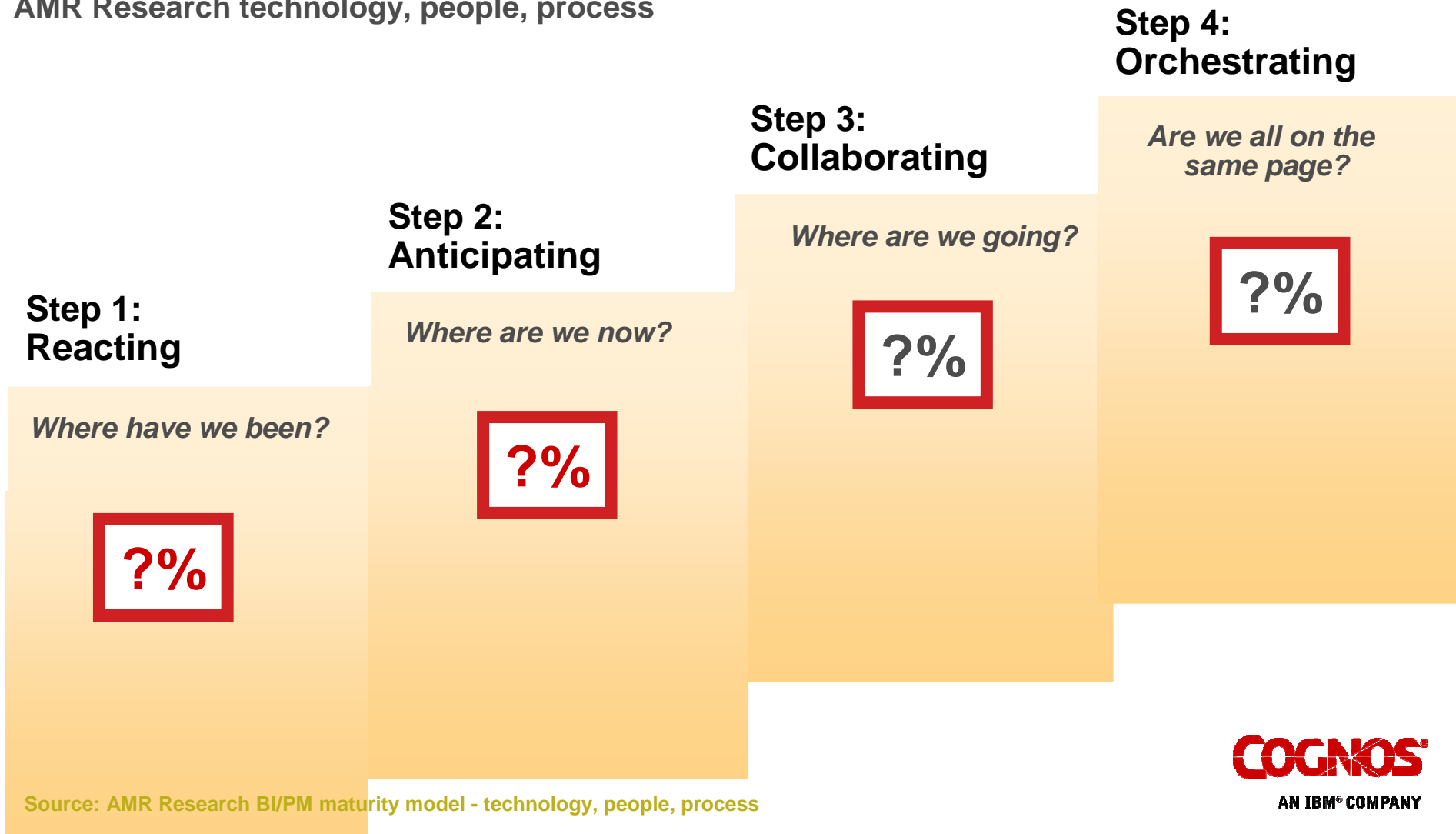
- Performance culture exists
- Top down executive buy-in
- Single consistent view of the enterprise
- Goal setting cascades through operational areas
- Integration with service-level agreements

Source: AMR Research BI/PM maturity model - technology, people, process



# Performance Management Maturity Model

AMR Research technology, people, process



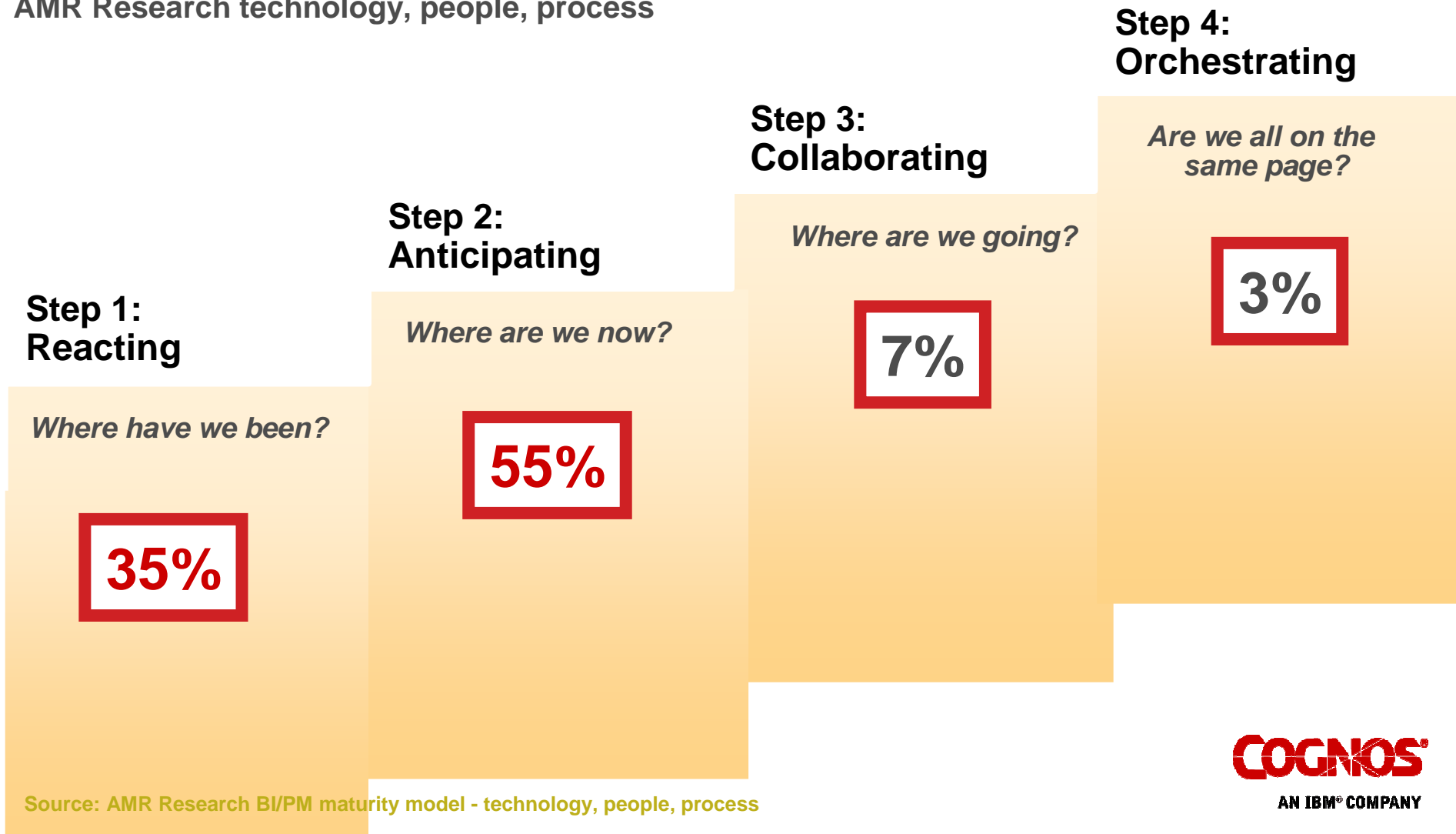
Source: AMR Research BI/PM maturity model - technology, people, process

**COGNOS**  
AN IBM® COMPANY



# Performance Management Maturity Model

AMR Research technology, people, process





## WHAT IS NEEDED?

- **Enterprise-class platform**
    - Reliable and scalable software that is low cost to deploy, manage and maintain
  - **Complete, consistent view of information, anytime, anywhere**
    - Capabilities for all user communities to ensure access to the right information for better decision-making
  - **Solutions based on Best Practices**
    - Analytic Applications, Services, Support and more that accelerate deployment and success
- 



## WHAT IS NEEDED?

- **Enterprise-class platform**
  - Reliable and scalable software that is low cost to deploy, manage and maintain
- **Complete, consistent view of information, anytime, anywhere**
  - Capabilities for all user communities to ensure access to the right information for better decision-making
- **Solutions based on Best Practices**
  - Analytic Applications, Services, Support and more that accelerate deployment and success







# Information On Demand Unlocking the Business Value of Information for Competitive Advantage



Customer & Product  
Profitability

Financial  
Risk Insight

Workforce  
Optimization

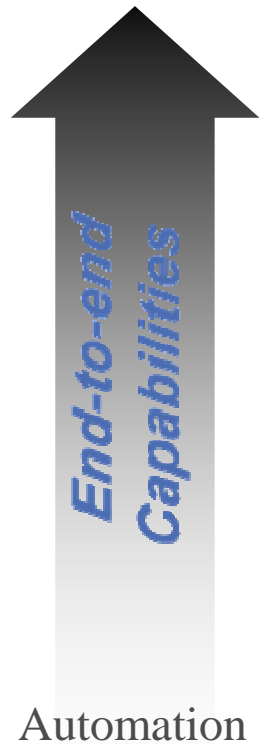
Dynamic  
Supply Chain

Multi-Channel  
Marketing

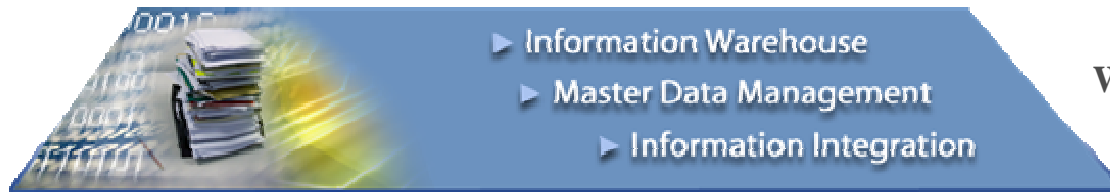
**Better Business  
Outcomes**

Optimization

## Business Optimization



**Business Intelligence &  
Performance Management**  
*Better understand  
& improve business  
performance*



**Information Integration,  
Warehousing & Management**  
*Single version of the truth...  
managed over time...  
flexible architecture*

*Leveraging Existing Investments*



**Efficient & Solid  
Foundation**  
*Establish & manage data and  
content over its lifecycle*

Other Information  
& Application Sources



Automation



## Enterprise-class platform

**Enterprise-class  
Deployment and Management**

**Performance, Quality,  
Conformance**

# COGNOS 8

**Purpose-built  
Web Services-based SOA**

**Foundation for BI and  
Performance Management**

**Open Data Access,  
Flexible Information  
Packaging**

**COGNOS<sup>®</sup>**  
AN IBM<sup>®</sup> COMPANY



# IBM can provide everything needed to unlock the business value of information

Expertise and Services



Market leading industry expertise, strategy and implementation services

Leveraging Information



Market leading Business Intelligence and Performance Management software

Establishing Trusted Information



Market leading Information Integration and Management software

Reliable, Scalable Hardware



Market leading servers and storage



## WHAT IS NEEDED?

- **Enterprise-class platform**
  - Reliable and scalable software that is low cost to deploy, manage and maintain
- **Complete, consistent view of information, anytime, anywhere**
  - Capabilities for all user communities to ensure access to the right information for better decision-making
- **Solutions based on Best Practices**
  - Analytic Applications, Services, Support and more that accelerate deployment and success





# All Capabilities in One Product

- Query
- Reporting
- Analysis
- Dashboarding
- Scorecards
- Event Management
- Planning & Budgeting
- Consolidation

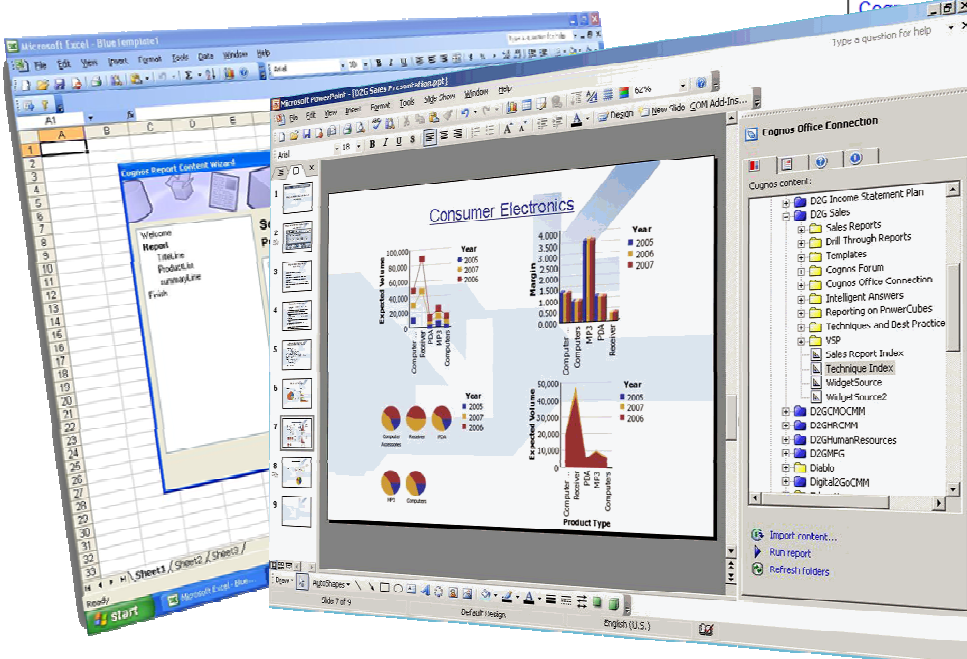
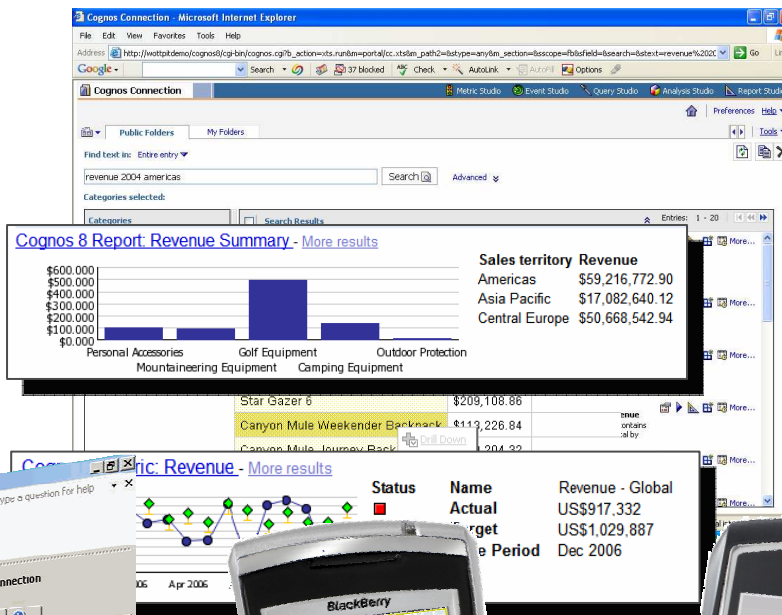


**Eliminates need for multiple tools,  
lowering costs and easing standardization**

# Cognos 8 Go - Consumer Modes



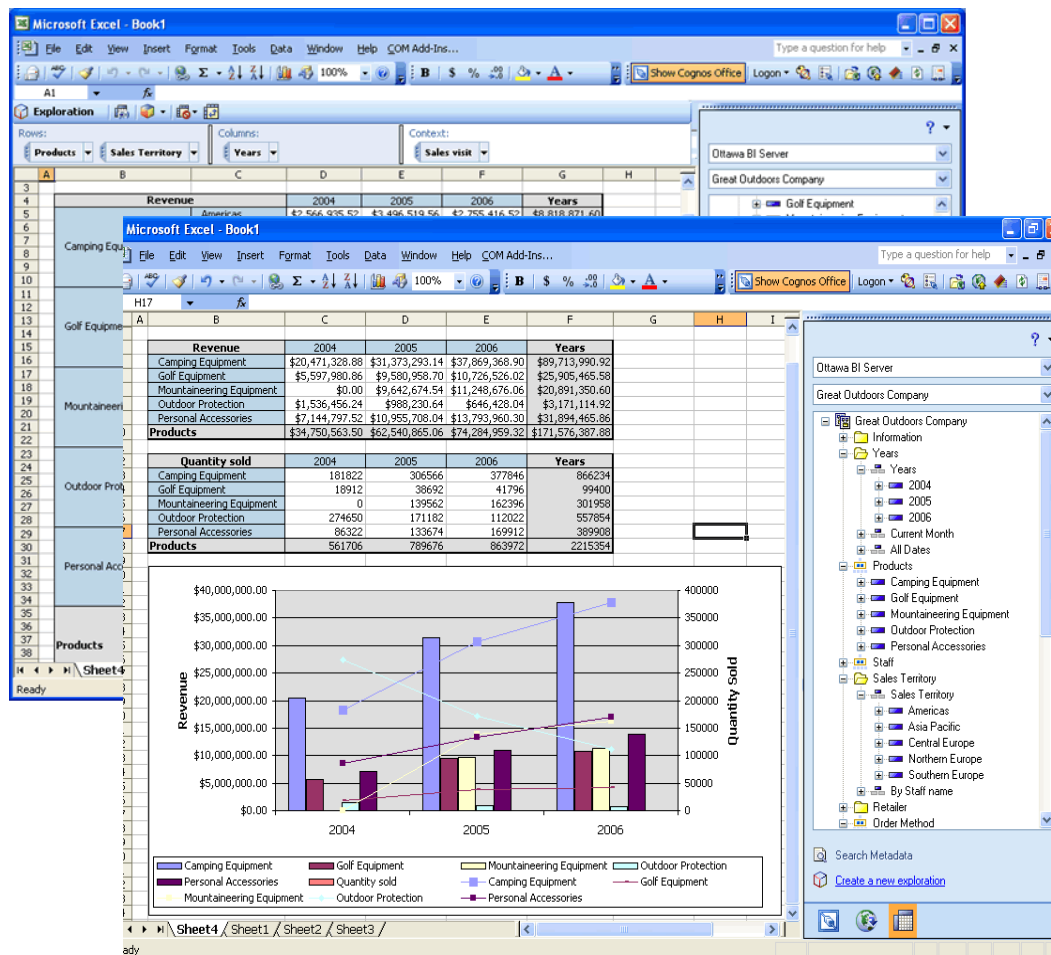
- Cognos 8 Go!Office
- Cognos 8 Go!Search
- Cognos 8 Go!Mobile



# Cognos 8 BI Analysis for Microsoft Excel

Excel-based exploration and analysis capability for the business user:

- Provides self-service drag-and-drop exploration
  - Intuitive integrated UI
  - Multidimensional
- Provides access to a single, trusted source of secure BI data
  - Refresh on demand
- Leverages full Excel interaction to support analysis, data and formatting
  - Formula-based; Linked calculations



# Cognos Now! - Operational Dashboards



**COGNOS  
NOW!**

## Continuous visibility

- For critical, intra-day monitoring
- Aggregated across multiple systems
- Data and process views

## Flexible user interface

- Self-service model
- User-defined thresholds, alerts
- Graphical watch points

## Role-based delivery

- Role based data level security
- Customization by end users

## Collaboration

- Built-in workflow/collaboration
- Complete loop from discovery to action





## WHAT IS NEEDED?

- 
- **Enterprise-class platform**
    - Reliable and scalable software that is low cost to deploy, manage and maintain
  - **Complete, consistent view of information, anytime, anywhere**
    - Capabilities for all user communities to ensure access to the right information for better decision-making
  - **Solutions based on Best Practices**
    - Analytic Applications, Services, Support and more that accelerate deployment and success
- 



# Blueprints

**FUNCTIONAL**

- Strategic Financial Planning and Forecasting
- Risk Analysis
- Sales Planning and Forecasting

**LIFE SCIENCES**

- Sample Clinical
- Sales C
- Clinic

**MANUFACTURING**

- Trade Promotio
- Sales and Ope

**PUBLIC SECTOR**

- Program Objecti
- Memorandum

**RETAIL**

- Store Operat
- Store Devel
- Strategic I
- Marketing
- Merchand
- Managem

**FINANCIAL SERVICES**

- Branch Performance
- Retail Banking Customer Segment Performance
- Corporate Banking Customer Segment Performance
- Product Performance for Insurance
- Product Performance for Banking
- Product Performance for Capital Markets/Investments
- Customer Segment Performance for Insurance

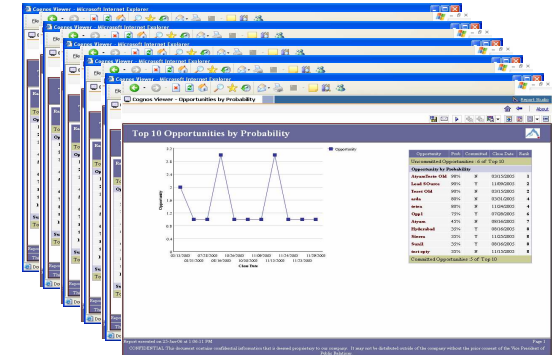
**FINANCIAL MANAGEMENT & CONTROL**

- Management & Financial Reporting
- International Financial Reporting Standard



## Breadth of Cognos Solutions for SAP

- ***Cognos Data Adapter for mySAP***
  - Out-of-the-box connectivity to all mySAP modules
  - Provides extensibility for additional BI authoring
  - Leverages RFCs and BAPIs (SAP Certified Interface)
  - Supports any language
  - Delivered as part of Cognos 8 BI (Additional Support Fee)
  
- ***Cognos 8 Report Packs for mySAP FI/CO***
  - 60+ out-of-the-box, commonly-used, customizable reports
  - Framework Manager Model and Subject Area Views
  - All built with Cognos 8 BI
  - English only
  - Packaged and sold separately





# IBM Cognos Services



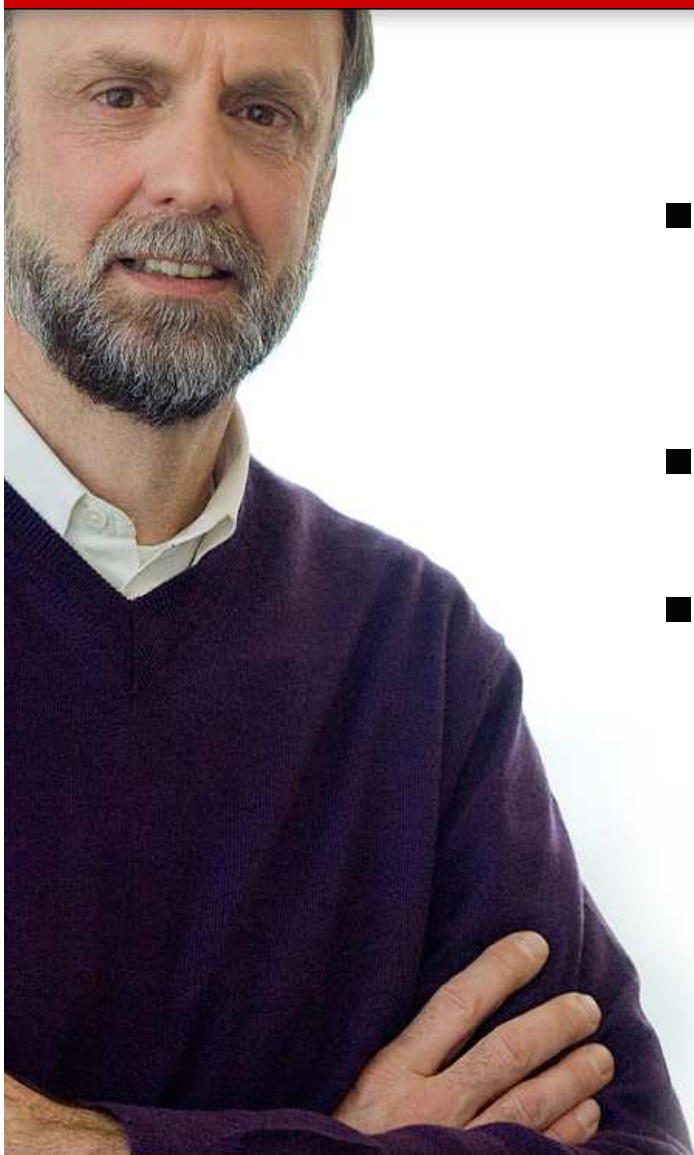
**COGNOS**  
AN IBM® COMPANY



## Our Commitment:

- Innovation that drives performance
- Solutions for your success
- Partnership for the journey

**COGNOS**  
AN IBM® COMPANY





**Thank You!**

**Vă mulțumesc !**

**COGNOS®**

AN IBM® COMPANY